

# TB 70 C VÁLVULA EN “S”



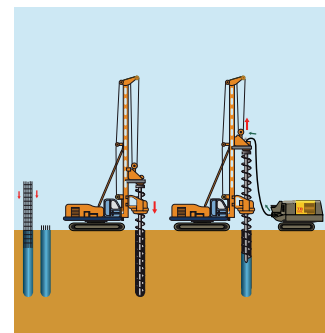
TB 70C: tecnología de vanguardia, nuevo diseño compacto para el mejor rendimiento en los lugares de trabajo más difíciles.

[www.turbosol.it](http://www.turbosol.it)

# TB 70C VÁLVULA EN "S"

TB 70C	70C	
TECHNICAL DATA		
Liquid cooled diesel engine	Kubota - V3307 CRTEGB turbo 4	(Stage III B / Stage III A) @ 2600
Infinitely adjustable output*	piston side 50 m <sup>3</sup> /h	rod side 70 m <sup>3</sup> /h
Max. aggregate size	35 mm	
Max. working pressure	piston side 80 bar	rod side 55 bar
Pumping cylinders	Ø 200 mm stroke of 1000 mm	
Max. strokes	27	37
Drive cylinder diameter	100/56 mm	
Delivery manifold	Ø 150 mm	
Hopper capacity	500 l	
Delivery distance*	200 m	160 m
Delivery height*	100 m	60 m
Filling height	150 cm	
Chassis	crawler with pads	
Size (L x W x H)	392X230X203 cm	
Weight (draw-bar)	4.250 kg	

The data indicated are theoretical and depend on the quality and consistency of the materials to be used, wear and tear of the pump and the diameter of the hoses. The performance in distance and height cannot be reached simultaneously.



## Characteristics

TB 70C is the new on crawler concrete pump with S-valve and variable output designed for concrete works.

State of the art hydraulic system, solid structure, brand new components setup, reliable controls ensure high level performance with all sort of concrete and low operating costs.

## Applications

- Pumping up to 35 mm of concrete
- Grouts
- Land reinforcement
- Micro-piles, pressurized injection of mortars and slurries
- Compaction grouting

## Technical comfort

- The practical doors on the canopy and the new construction concept make maintenance and control operations quick and easy.
- Tubular chassis including water, oil and diesel tanks.
- Central single lifting eye.
- Discharge door hydraulically operated for fast cleaning operations.
- Components generously dimensioned.
- Fully hydraulic controls.
- New internal setup concept.
- Compact design.
- New hopper-valve-agitator design ideal even for harsh concrete.

## Scope of delivery

- 4-cylinder liquid cooled diesel engine
- Hopper assembly with S-valve and agitator
- Concrete grill with vibrator
- Centralized lubrication system
- Outlet collector Ø 150 mm with Victaulic couplings
- Hydraulic discharge door
- Safety horn
- Hydraulic circuit with optimized exchange sequence
- Electromechanical control board
- Bosch Rexroth variable displacement pump
- Lifting eye
- Steel bend at 90° Ø 150 and reduction cone from Ø 150 to Ø 125
- Radio remote control
- 2 washing sponges
- Manual grease pump
- Accessory box

## Optionals

- Water pump 40 l/m' - 20 bar
- Various dimensions hoses Ø 125, Ø 100, Ø 75, Ø 65, Ø 50 and related accessories
- Hydraulically controlled air compressor, twin-cylinder, capacity 800 l/min



"Somos tu mejor solución...  
Sin importar el tamaño de tus proyectos"

info@eurorep.mx www.eurorep.mx

Oficina Central  
Presas Salinillas 306-1, Irrigación 11500, CDMX. Tel. (52-55) 5395 - 0305

Patio y Sucursal Querétaro  
Carr. Querétaro-San Luis Potosí km 17+ 340, El Salitre Querétaro. Tel. (52-442) 628-2093

Oficinas Regionales: Monterrey / Torreón / Guadalajara